

archlit reserves the right to make changes without prior notice. (10.18.2021)

Wall system in aluminum extrusion and acoustic panels for acoustic treatment of spaces. Acoustic panels in 1" (NRC of 0.90) and 2" (NRC of 0.95). Different configurations upon designer needs. Upholstery in different colors. Selection of custom provided by client possible or printed on acoustic material. archlit will need to test selection to verify is workable. Programmable drivers (at factory) allow different outputs. Drivers are remote up to 80 feet. Sound are waves that require surfaces to generate proper treatment in spite of the panels composition (that are also improving the acoustics). A combination of the panel and it's material for sound absorption.

NaWaTu

Naive Wall Tuneful

Lumen Output

- 3017 - 3000 K 1200 lumens / ft 12 w /ft
- 3014 - 3000 K 1000 lumens / ft 10 w /ft
- 3011 - 3000 K 780 lumens / ft 7.5 w /ft
- 3008 - 3000 K 560 lumens / ft 5.5w /ft
- 3005 - 3000 K 350 lumens / ft 3.1 w /ft
- 3517 - 3500 K 1200 lumens / ft 12 w /ft
- 3514 - 3500 K 1000 lumens / ft 10 w /ft
- 3511 - 3500 K 780 lumens / ft 7.5 w /ft
- 3508 - 3500 K 560 lumens / ft 5.5w /ft
- 3505 - 3500 K 350 lumens / ft 3.1 w /ft

WhTu - White tuning 2700K @ 1050 lumens/foot
and 6500k @1200 lumens/foot 12.5 watt/foot

All Uplight versions with light will have a transparent diffuser
Use of programmable drivers allow different outputs (lumen output and load) to fix color temperature versions

Finish

- WH - White
- BK - Black
- Cu - Custom color
- Specify RAL color
- Metal parts, canopy, and end caps

Finish of Fabric

- Gr - Gray
- Acoustic capabilities by panels. Fabric helps to achieve performance. Finish with a thin felt fabric Std is Sleet Gray 471 from chart
- CUFa - Acoustical material
- Please select chart number Colors can have variations depending on screen settings
- Client - Custom Standard or by client Fabric
- Provided by client. archlit will need samples To study possibility of work-ability with panels.
- Custom Standard, specify color from chart at Custom finish



Panels width

P2 - 2' nominal

P3 - 3' nominal

P4 - 4' nominal

Length by run choice, all panels in the same run will share the same width

Thickness of panels

Th1 - 1" thickness NRC 0.90

Th2 - 2" thickness NRC 0.95

Acoustic Blind panels

AcBl - Acoustic Blind Panels

Dimming

O - Non dimmable 120v

1 - Non dimmable 277v

4 - Dimmable 0-10v (4wires, 120 or 277 v)

Runs

B - 2' nominal 25 1/2" LED module 23 5/8"

C - 3' nominal 36" LED module 34 1/8"

D - 4' nominal 48" LED module 46 1/8"

E - 5' nominal 58 1/2" LED module 56 5/8"

F - 6' nominal 71 1/2" LED module 69 5/8"

G - 7' nominal 81" LED module 79 1/8"

H - 8' nominal 93" LED module 91 1/8"

Total Run: (0 ft 0 in)

Emergency

OO - No Emergency

EM - Emergency

Specify qty only if Emergency

Specify quantity of 4' nominal in runs

Emergency and driver remote, up to 50"

Use BWG 18 for connections

Max 4 feet Emergency per module

Specify qty of emergency per run

Notes:

McAdam 3 step binning

More than 90 CRI

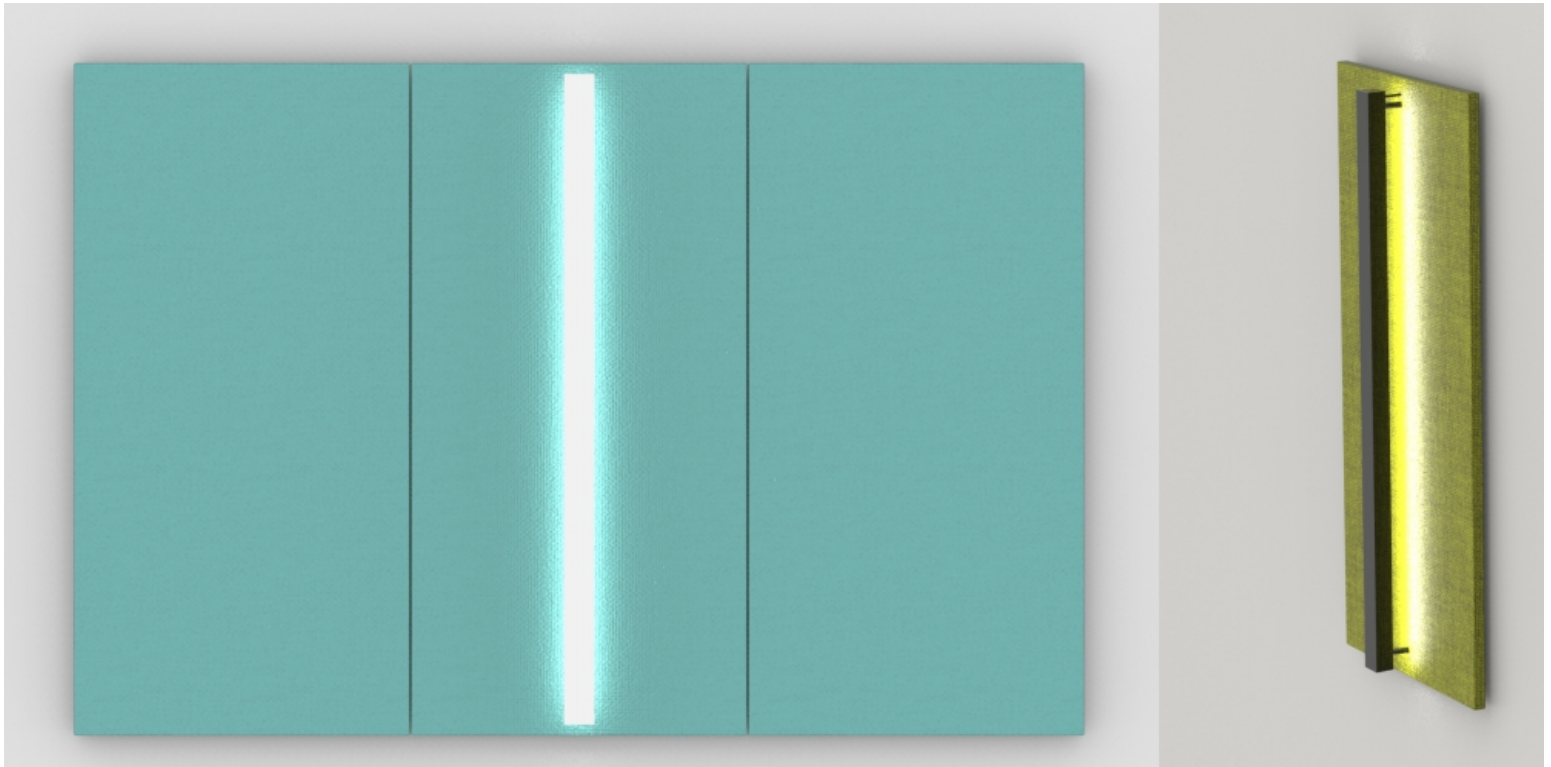
Drivers remote

Max distance to drivers 80'

1" panels NRC 0.90

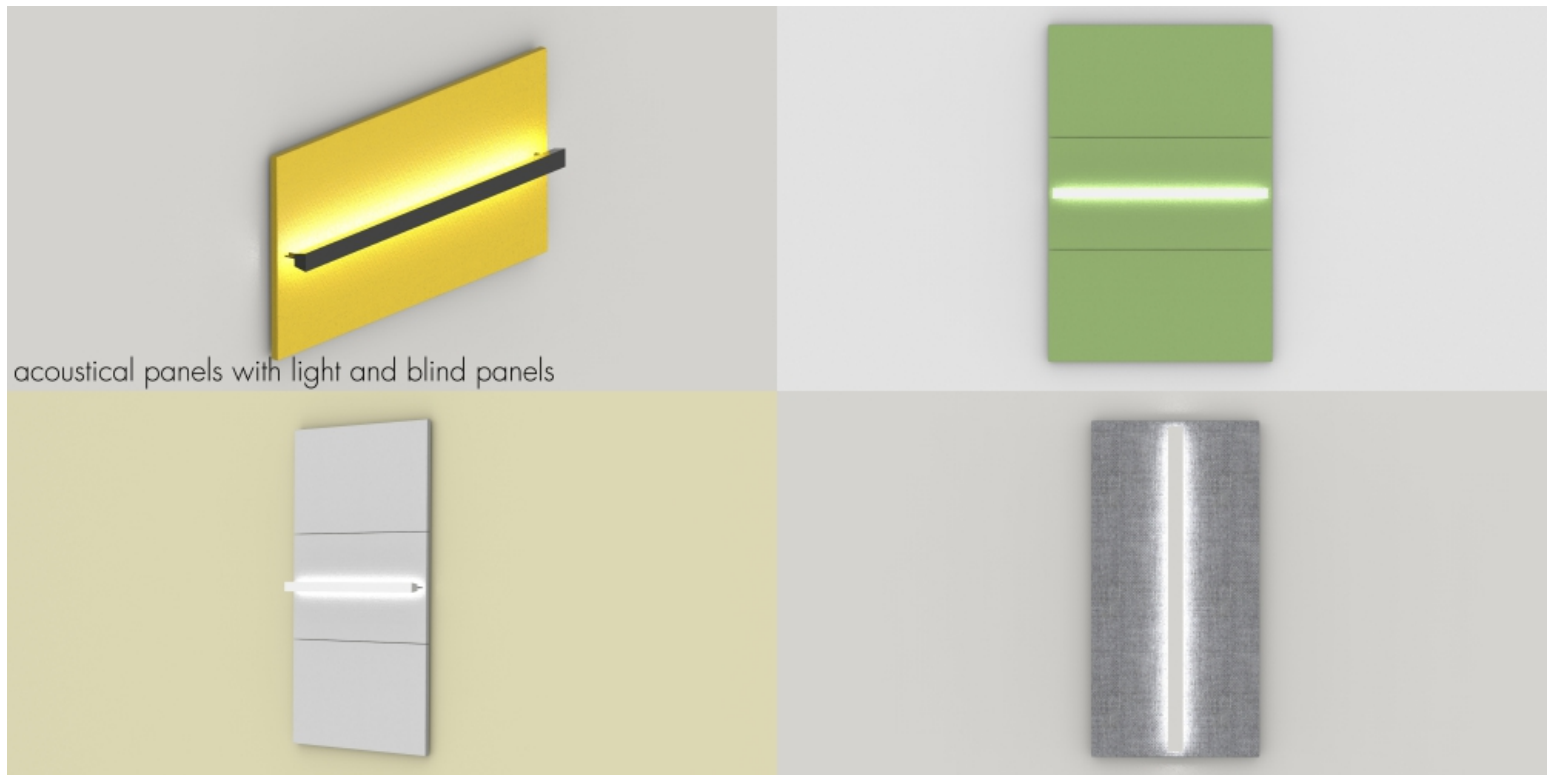
2" panels NRC 0.95

In case of runs and blind panels please add graphic with design concept



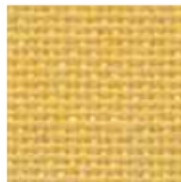
Naive Wall Tuneful

Naive / Wall



acoustical panels with light and blind panels

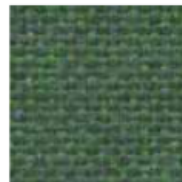
Standard FR701 Acoustic fabric Options



Yellow
744



Chartreuse
734



Fir
743



Leaf
755



Dune
749



Sunshine
797



Lime
721



Teal
742



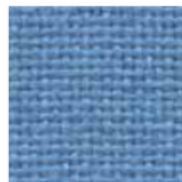
Green Neutral
402



Stream
757



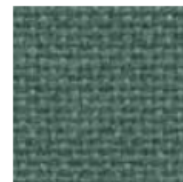
Orange
746



Sky
740



Sapphire
745



Blue Spruce
467



Verte Papier
561

Proudly woven in the USA

Flammability (ASTM E84)
Class I or A



Naive Wall Tuneful

Naive / Wall

While we make every effort to make sure the colors you see here are accurate, colors may vary depending on your screen



Acoustic capabilities by panels. Fabric helps to achieve performance.

Content

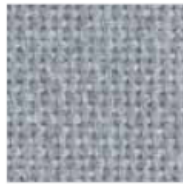
100% post-consumer recycled polyester



Cleaning Code

Standard Care Label W-S.
Clean with water based cleaning agents, foam or pure, water free solvents.
Vacuuming or light brushing is recommended to prevent dust and soil buildup.





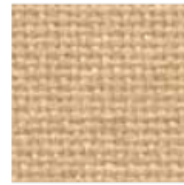
Crystal Blue
175



Blue Neutral
401



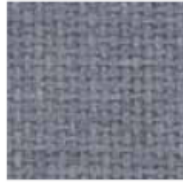
Cinnabar
422



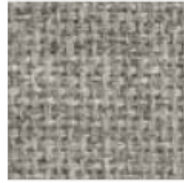
Straw
747



Silver Papier
538



Steel Grey
471



Grey Mix
238



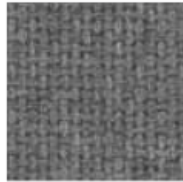
Pumice
423



Light Moss
754



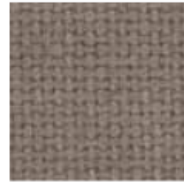
Cement Mix
750



Flannel
795



Amethyst
424



Moleskin
796



Earth
792



Silver Neutral
406

NRC panels 1" = 0.90

NRC panels 2" = 0.95

Driver Boxes

