

archlit reserves the right to make changes without prior notice. (10.18.2021)

LeeSti Bird Fle is an acoustic treatment lighting fixture that can be direct/indirect and generates an acoustical treatment as it's panels have NRC (Noise Reduction Coefficient) 0.90 (1" thickness) or 0.95 (2" thickness)..

Acoustic capabilities by panels. Fabric helps to achieve performance and generates the desired finish.

Drivers remote max 80'

LeBiFle

LeeSti Bird Fle

Downlight Output

FaCap - No lighting, Metal cap

3017do - 3000 K 1200 lumens / ft 12 w /ft

3014do - 3000 K 1000 lumens / ft 10 w /ft

3011do - 3000 K 780 lumens / ft 7.5 w /ft

3008do - 3000 K 350 lumens / ft 5.5w /ft

3005do - 3000 K 500 lumens / ft 3.1 w /ft

Low Output

3517do - 3500 K 1200 lumens / ft 12 w /ft

3514do - 3500 K 1000 lumens / ft 10 w /ft

3511do - 3500 K 780 lumens / ft 7.5 w /ft

3508do - 3500 K 560 lumens / ft 5.5w /ft

3505do - 3500 K 350 lumens / ft 3.1 w /ft

Low output

WhTudo - White tuning 2700K @ 1050 lumens/foot

and 6500k @1200 lumens/foot 12.5 watt/foot

Use of programmable drivers allow different outputs (lumen output and load) in fix color temperature versions

Uplight Output

NoUp - No Uplight

3017up - 3000 K 1200 lumens / ft 12 w /ft

3014up - 3000 K 1000 lumens / ft 10 w /ft

3011up - 3000 K 780 lumens / ft 7.5 w /ft

3008up - 3000 K 560 lumens / ft 5.5w /ft

3005up - 3000 K 350 lumens / ft 3.1 w /ft

3517up - 3500 K 1200 lumens / ft 12 w /ft

3514up - 3500 K 1000 lumens / ft 10 w /ft

3511up - 3500 K 780 lumens / ft 7.5 w /ft

3508up - 3500 K 560 lumens / ft 5.5w /ft

3505up - 3500 K 350 lumens / ft 3.1 w /ft

WhTuUp - White tuning 2700K @ 1050

lumens/foot and 6500k @1200 lumens/foot 12.5

watt/foot

All Uplight versions with light will have a transparent diffuser

Use of programmable drivers allow different outputs (lumen output and load) in fix color temperature versions

Finish

WH - White

BK - Black

Cu - Custom color

Specify RAL color

Metal parts,canopy, and end caps



Finish Sides

WH - White

BK - Black

CUs - Custom Color Paint

Specify RAL color

Wwa - Wood Finish White Ash

WWa - Wood Finish Walnut

CUWood - Cu Wood Finish

Specify type of wood. Factory will charge for samples for approval if client requests them

Finish of Fabric

Gr - Gray

Acoustic capabilities by panels. Fabric helps to achieve performance. Finish with a thin felt fabric Std is Sleet Gray 471 from chart

CUFa - Acoustical material

Please select chart number Colors can have variations depending on screen settings

Client - Custom Standard or by client Fabric

Provided by client. archlit will need samples To study possibility of workability with panels.

Custom Standard, specify color from chart at Custom finish

Dimming

O - Non dimmable 120v

1 - Non dimmable 277v

4 - Dimmable 0-10v (4wires, 120 or 277 v)

Runs

B - 2' nominal 23 3/4"

D - 4' nominal 47 1/2"

H - 8' nominal 93"

Total Run: (0 ft 0 in)

Canopy

RD - Round 4 1/4"

SQ - Square Plate 4 1/4" x 4 1/4"

Suspension Aircraft Cable

36 - 36" max

100 - 100" max

Emergency

00 - No Emergency

EM - Emergency

Specify qty only if Emergency

Specify quantity of 4' nominal in runs

Emergency and driver remote, up to 50"

Use BWG 18 for connections

Max 4 feet Emergency per module

Specify qty of emergency per run

Notes:

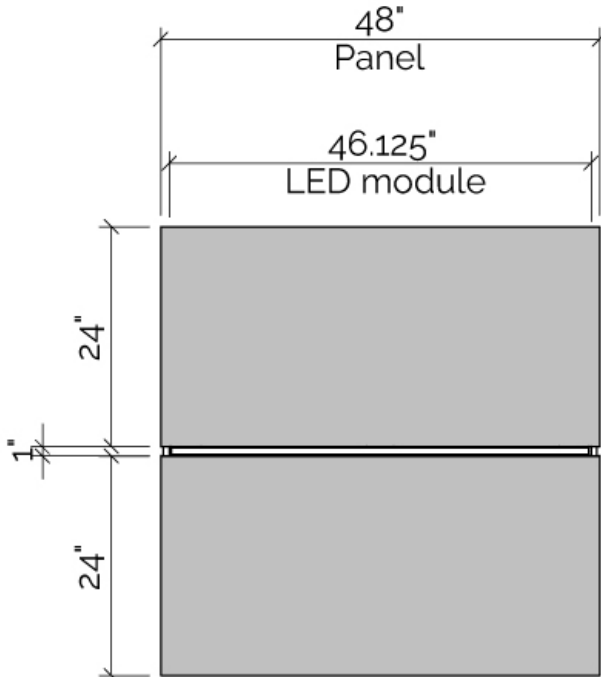
McAdam 3 step binning

More than 90 CRI

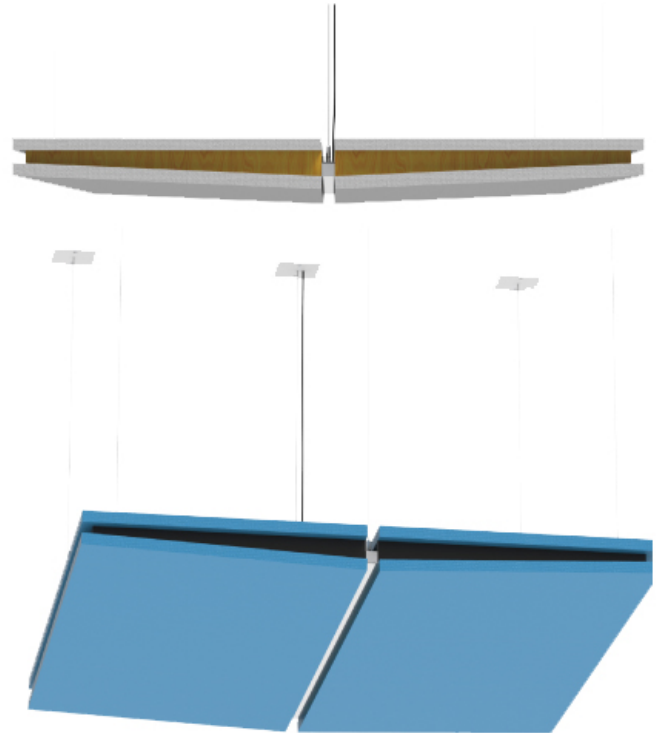
Drivers remote

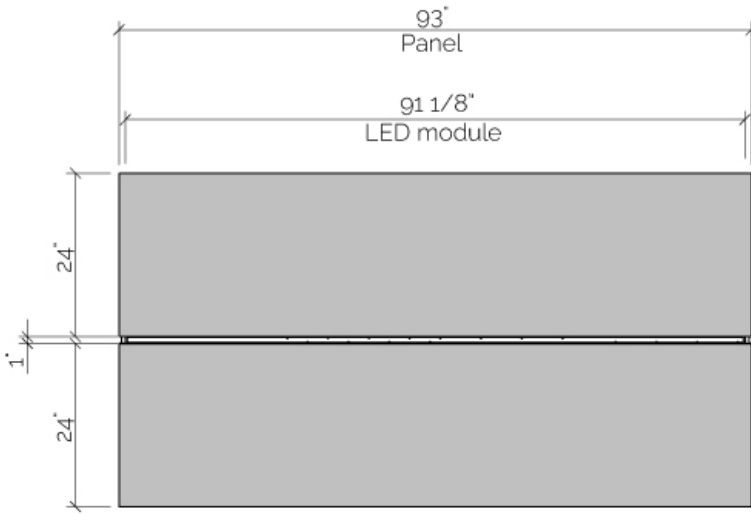
Max distance to drivers 80'

1" panels NRC 0.90

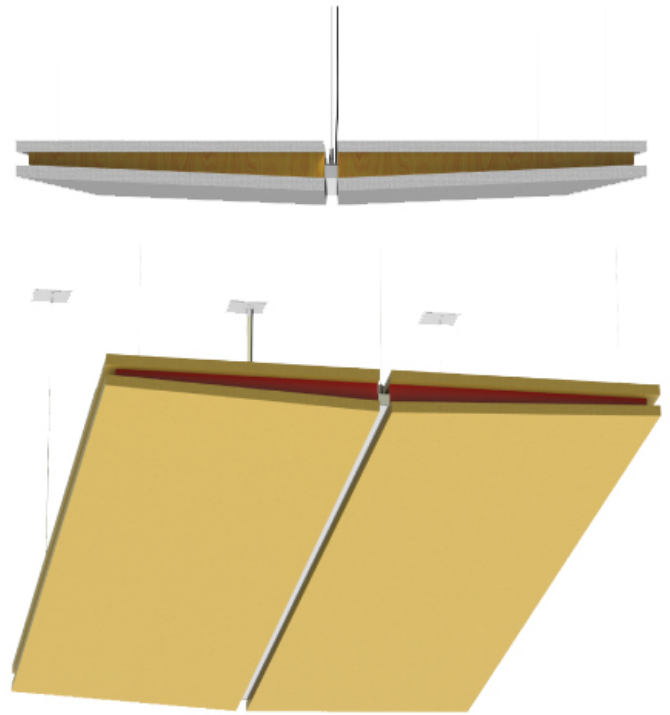


Bottom view





Bottom view



Standard FR701 Acoustic fabric Options



Yellow
744



Chartreuse
734



Fir
743



Leaf
755



Dune
749

Proudly woven in the USA



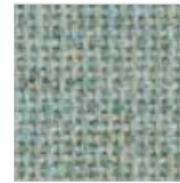
Sunshine
797



Lime
721



Teal
742



Green Neutral
402

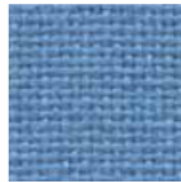


Stream
757

Flammability (ASTM E84)
Class I or A



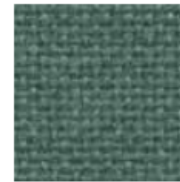
Orange
746



Sky
740



Sapphire
745



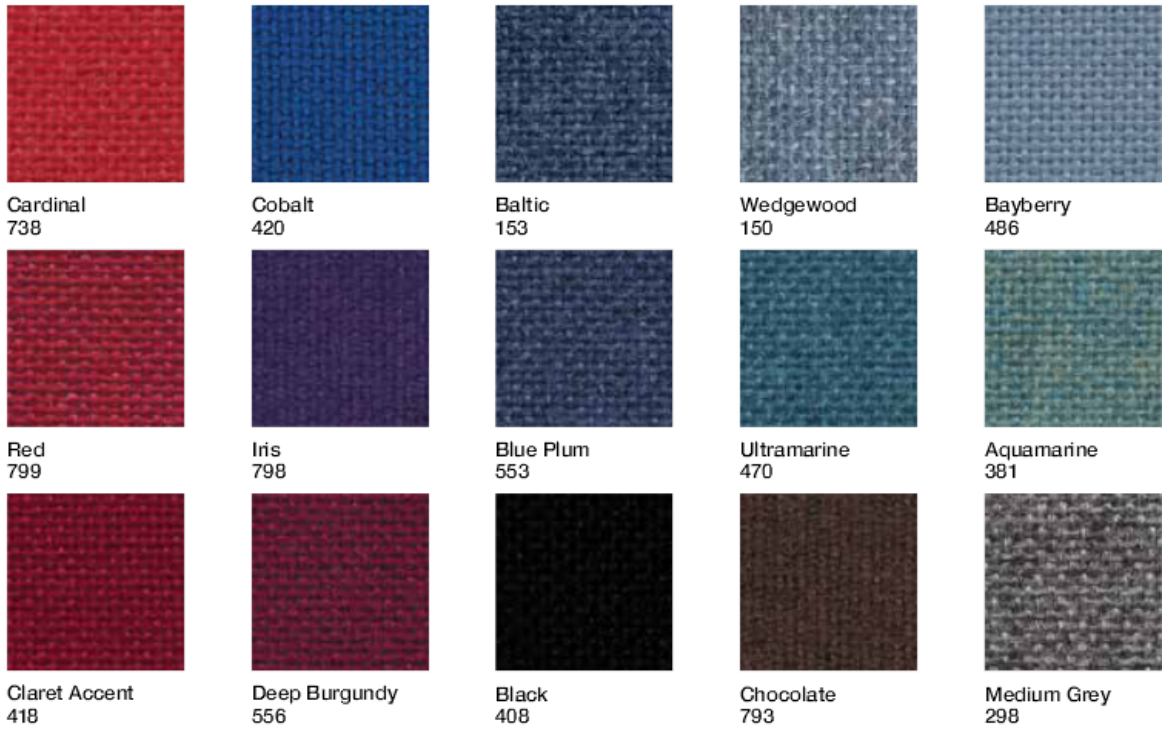
Blue Spruce
467



Verte Papier
561



While we make every effort to make sure the colors you see here are accurate, colors may vary depending on your screen



Acoustic capabilities by panels. Fabric helps to achieve performance.

Content

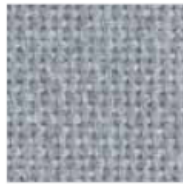
100% post-consumer recycled polyester



Cleaning Code

Standard Care Label W-S. Clean with water based cleaning agents, foam or pure, water free solvents. Vacuuming or light brushing is recommended to prevent dust and soil buildup.





Crystal Blue
175



Blue Neutral
401



Cinnabar
422



Straw
747



Silver Papier
538



Steel Grey
471



Grey Mix
238



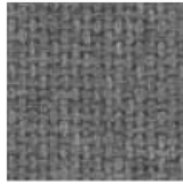
Pumice
423



Light Moss
754



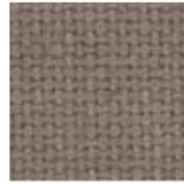
Cement Mix
750



Flannel
795



Amethyst
424



Moleskin
796



Earth
792



Silver Neutral
406

NRC panels 1" = 0.90

NRC panels 2" = 0.95

Driver Boxes

